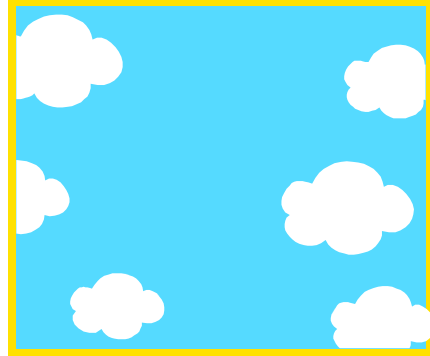


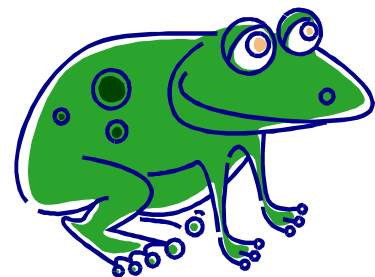
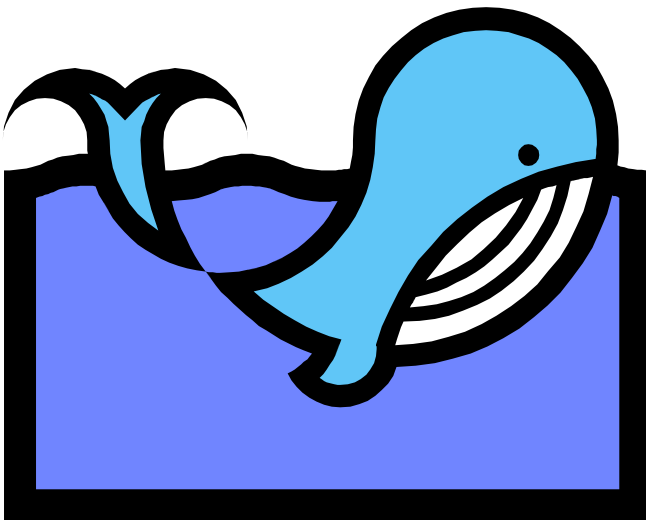
Tell me dis

Whit is blue, as blue as blue can be?
Is it a clock, wi a hoarny back –
or da sky on a bricht simmer day?



Phew whit a haet!

Whit is green, as green as green can be
Is it a whale, wi a graet swashin tail –
or a froag, wi his twa muckle een?



Jim  jimp

**Whit is yalloo, as yalloo as yalloo can be?
Is it a cat, curled up i your lap –
or bananas, hingin fae a tree?**



Nyim nyim!

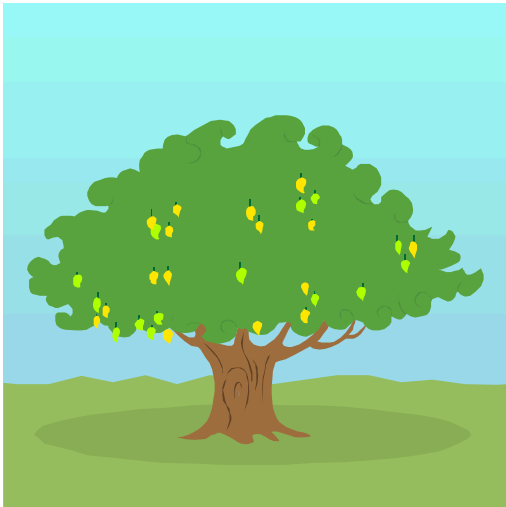


**Whit is black, as black as black can be?
Is it a snowman, on a caald frosty day –
Or a scarf, sweemin i da sea?**



Whit a lent o a neck!

Whit haes seeven colours, aa in wan?
Is it a floer, or a bird, or a tree?
Or a rainbow – foo mony colours can you see?



Can you name dem aa?